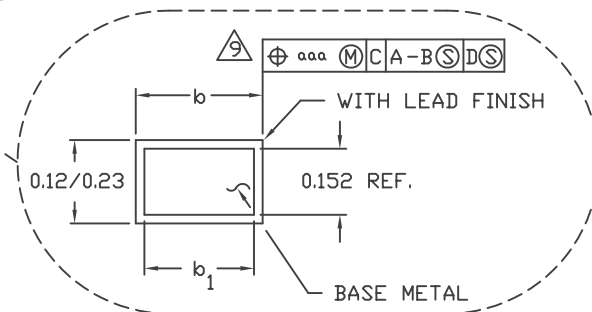
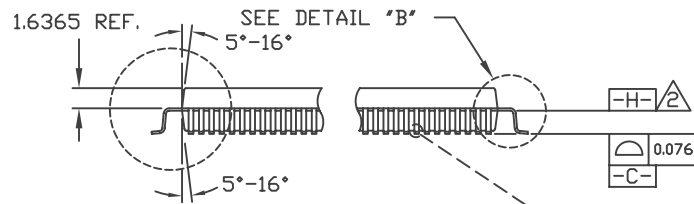
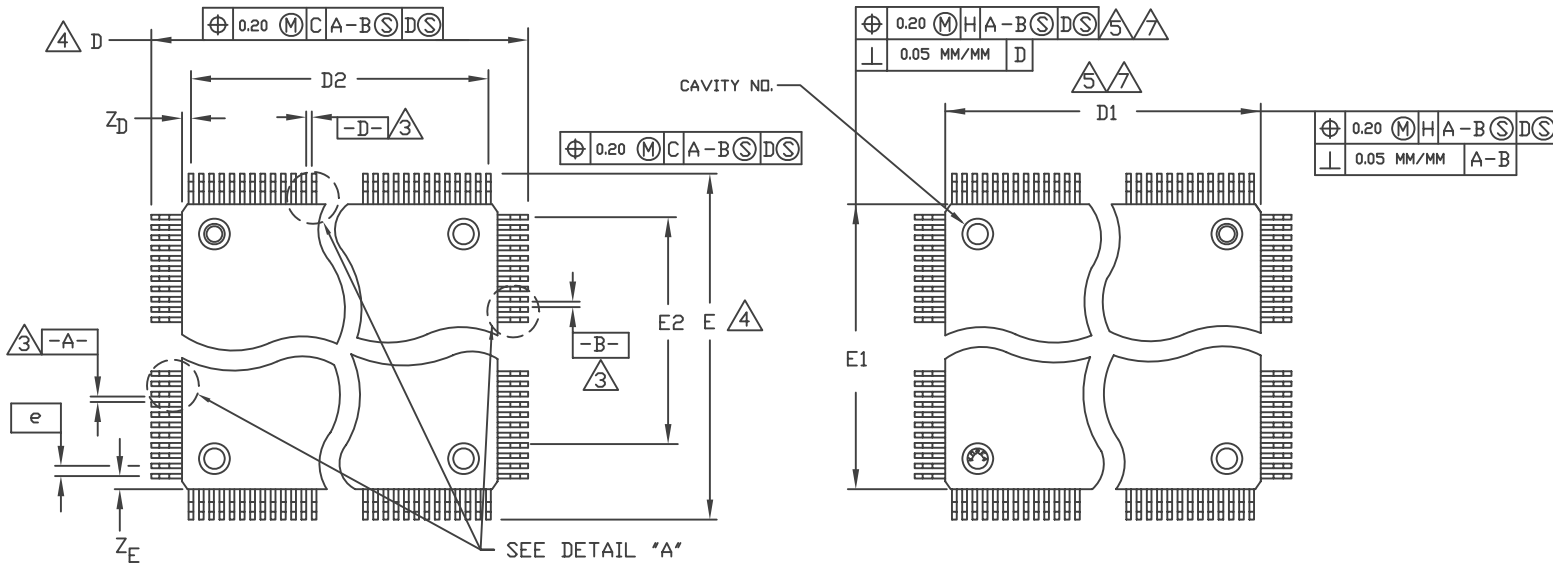


REVISIONS

ZONE	REV	ECN	DESCRIPTION	DATE	APPROVED
	A		INITIAL RELEASE	09/24/07	K.H. THE

TOP VIEW

BOTTOM VIEW



8. PACKAGE TOP DIMENSIONS ARE SMALLER THAN PACKAGE BOTTOM DIMENSIONS BY 0.15(.006) MILLIMETERS.

△ THESE DIMENSIONS TO BE DETERMINED AT DATUM PLANE $\overline{H-H}$.

6. "N" IS NUMBER OF TERMINALS.

△ DIMENSIONS D1 AND E1 DO NOT INCLUDE MOLD PROTRUSION. ALLOWABLE MOLD PROTRUSION IS 0.254mm/.010" PER SIDE ON D1 AND E1 DIMENSIONS.

△ TO BE DETERMINED AT SEATING PLANE $\overline{C-C}$.

△ DATUMS $\overline{A-B}$ AND $\overline{D-D}$ TO BE DETERMINED AT DATUM PLANE $\overline{H-H}$.

△ DATUM PLANE $\overline{H-H}$ LOCATED AT MOLD PARTING LINE AND COINCIDENT WITH LEAD, WHERE LEAD EXITS PLASTIC BODY AT BOTTOM OF PARTING LINE.

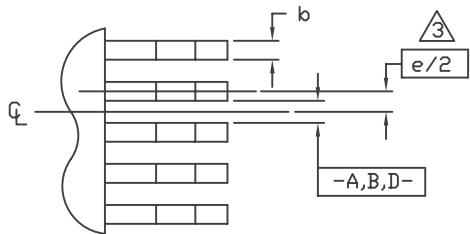
1. ALL DIMENSIONS AND TOLERANCES CONFORM TO ASME Y14.5M-1994.
NOTES: UNLESS OTHERWISE SPECIFIED

11. THIS DRAWING COMPLIES WITH JEDEC REGISTERED OUTLINE MS-029.

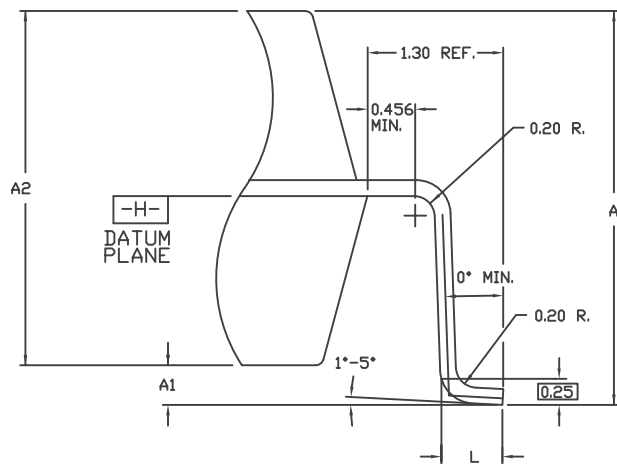
10. CONTROLLING DIMENSION: MILLIMETER.

9. DIMENSION b DOES NOT INCLUDE DAMBAR PROTRUSION. ALLOWABLE DAMBAR PROTRUSION SHALL BE 0.08 MM/.003" TOTAL IN EXCESS OF b DIMENSION AT MAXIMUM MATERIAL CONDITION. DAMBAR CAN NOT BE LOCATED ON THE LOWER RADIUS OR THE FOOT.

DRAWN D. GASTELUM	DATE 09/24/07	 QUICKLOGIC CORP
APPROVED BY K.H. THE	DATE 09/24/07	
		PQFP 32X32X3.4MM 240 LD, 1.3MM FORM
REFERENCE PACKAGE OUTLINES	PROJECTION 	SCALE N/A
		DWG NO 03-015-70
		REV A
	QUICKLOGIC PKG CODE: PQ240	SHEET 1 OF 2



DETAIL "A"
EVEN LEADS ONLY



DETAIL "B"
SCALE: 40/1

SYMBOL	VARIATIONS			NOTE
	ALL DIMENSIONS IN MILLIMETERS			
	MIN.	NOM.	MAX.	
A	3.55	3.78	4.10	
A ₁	0.25	0.38	0.50	
A ₂	3.30	3.40	3.50	
D	34.40	34.60	34.80	4
D ₁	31.90	32.00	32.10	7
D ₂	29.50 REF.			
Z _D	1.25 REF.			
E	34.40	34.60	34.80	4
E ₁	31.90	32.00	32.10	7
E ₂	29.50 REF.			
Z _E	1.25 REF.			
L	0.46	0.56	0.66	
N	∅	240	∅	
e	0.50 BSC			
b	0.17	∅	0.27	
b ₁	∅	0.195	∅	
a.a.a	0.07			